



# RICOH Stereo Camera Software

## R-Stereo-GigE-Package

User's Guide

RICOH Industrial Solutions Inc.

## Contents

<b>1. SOFTWARE COMPONENTS</b> .....	<b>3</b>
<b>2. SOFTWARE OVERVIEW</b> .....	<b>4</b>
<b>3. OPERATING CONDITIONS</b> .....	<b>5</b>
<b>4. INSTALLATION PROCEDURE</b> .....	<b>6</b>
4.1 Installing R-Stereo-GigE-Package .....	6
4.2 Installing eBUS Universal Pro Driver .....	10
<b>5. WINDOWS SETTINGS</b> .....	<b>12</b>
<b>6 UNINSTALLATION PROCEDURE</b> .....	<b>15</b>
6.1 Uninstalling R-Stereo-GigE-Package .....	15
6.2 Uninstalling eBUS Universal Pro Driver .....	16

## 1. Software Components

1.1 R-Stereo-GigE-Package consists of the following software.

- R-Stereo-GigE-Player
- eBUS Universal Pro Driver
- R-Stereo-GigE-SDK
- R-Stereo-GigE-Calibration

The instruction manual for each software is installed under "Start" - "All Programs" - "R-Stereo-GigE-Package X.X.X.XX" - "Doc."

## 2. Software Overview

2.1 The following provides an overview of each software.

R-Stereo-GigE-Player	Application for capturing images from a stereo camera and displaying them in real time.
eBUS Universal Pro Driver	Driver for capturing images from the stereo camera.
R-Stereo-GigE-SDK	Software development kit (SDK) containing the programs and documents required to develop software for the stereo camera and lighting.
R-Stereo-GigE-Calibration	Application for calibrating the stereo camera.

## 3. Operating Conditions

3.1 The following shows the recommended operating conditions for this software.

OS	Windows® 7 Professional (32-bit/64-bit)*
CPU	Intel Core i5 2.7 GHz or faster
Memory	4 GB or more
HDD	At least 1 GB of free space
LAN port	1 Gigabit Ethernet port
Network adapter	Support for jumbo frames of 9 KB or larger

\* Windows is a trademark or registered trademark of Microsoft Corporation in the United States.

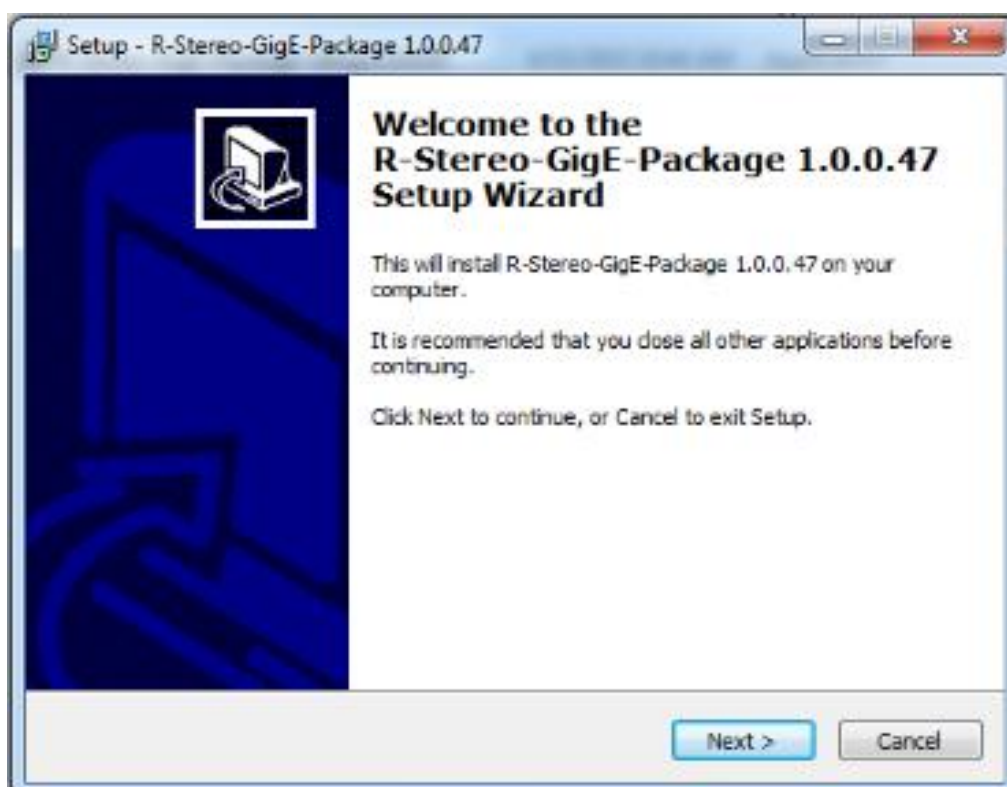
## 4. Installation Procedure

### 4.1 Installing R-Stereo-GigE-Package

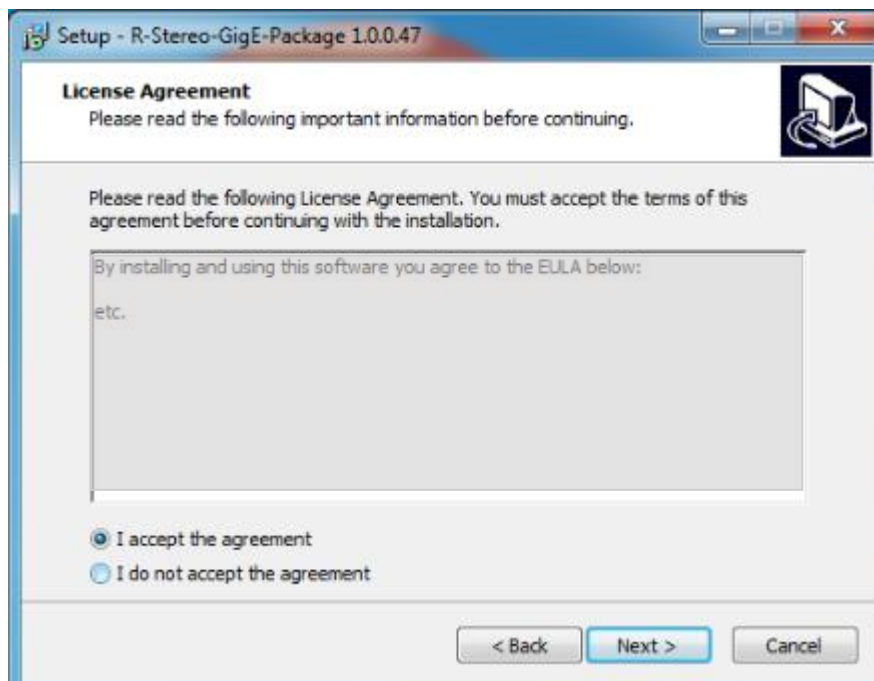
4.1.1 Save R-Stereo-GigE-Package-Setup.X.X.X.XX.exe in any folder and then run it.

4.1.2 When the language selection dialog box opens, select either "日本語" or "English."  
After making the selection, click the OK button.

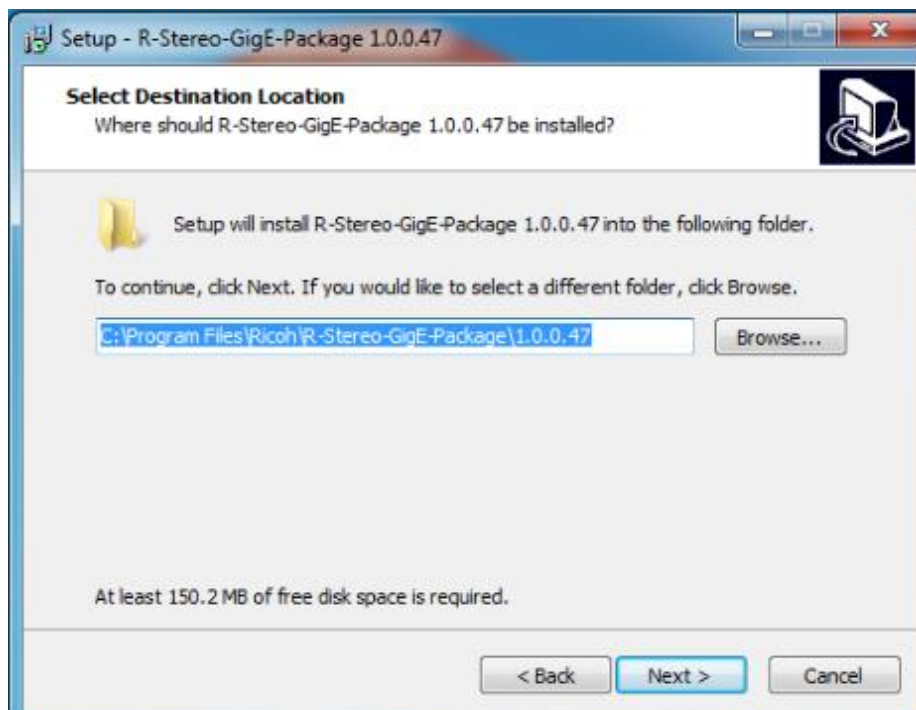
4.1.3 Click the Next button.



4.1.4 Select "Agree" and then click the Next button.

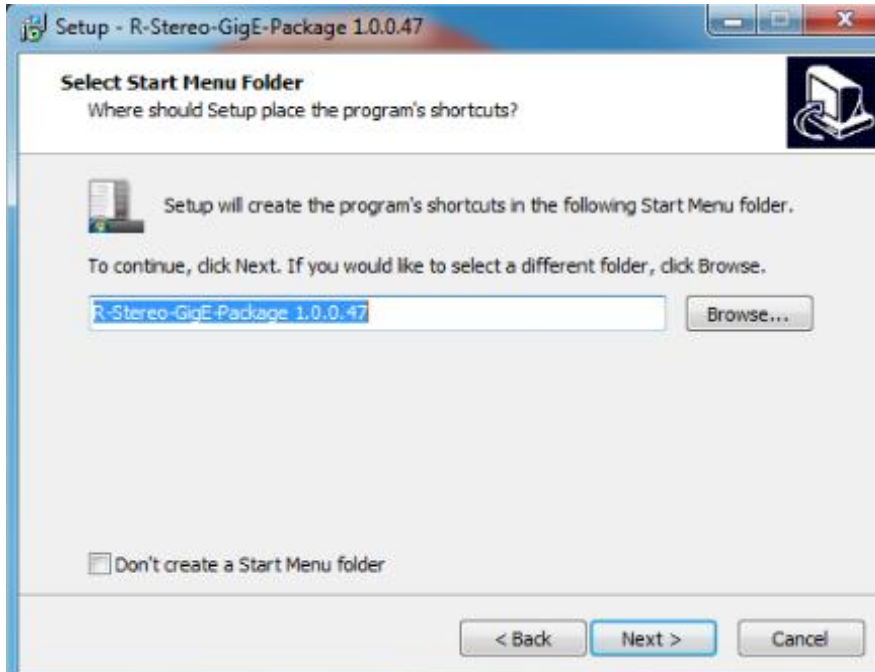


4.1.5 Specify the installation destination and then click the Next button.

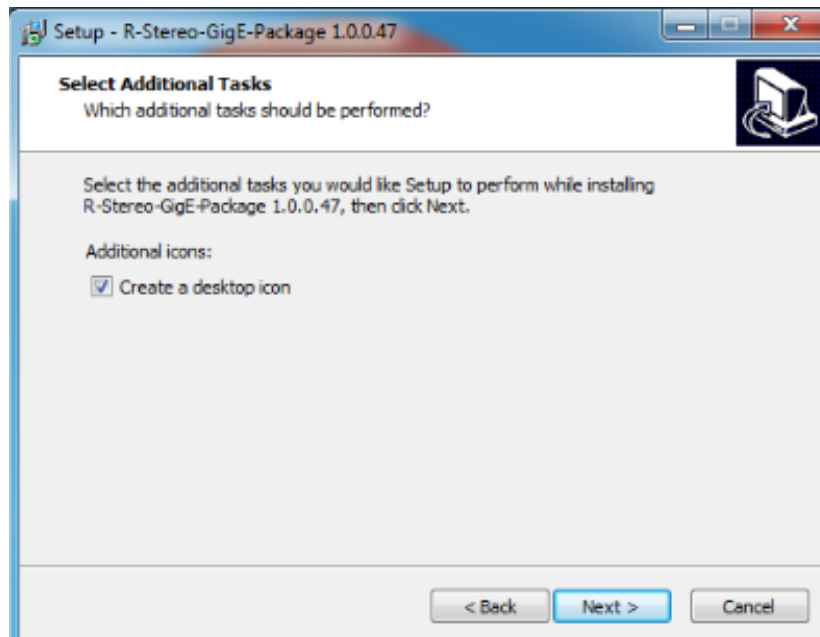


4.1.6 If you wish to create program icons in the Start menu, specify the location to create them and then click the Next button.

If you do not wish to create a program group, select the check box.

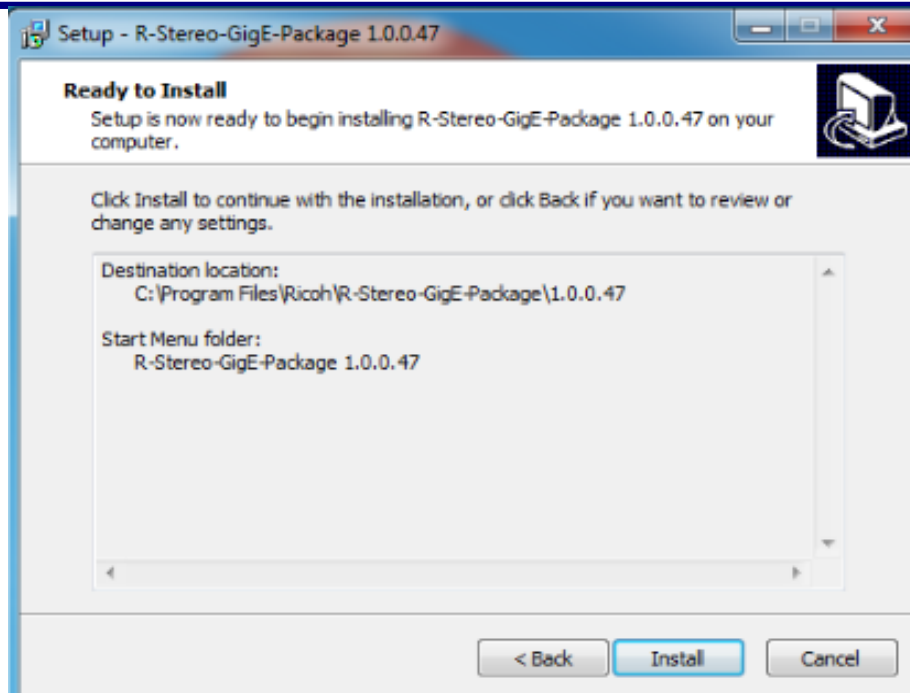


4.1.7 If you wish to create shortcuts on the desktop, select the check box and then click the Next button.

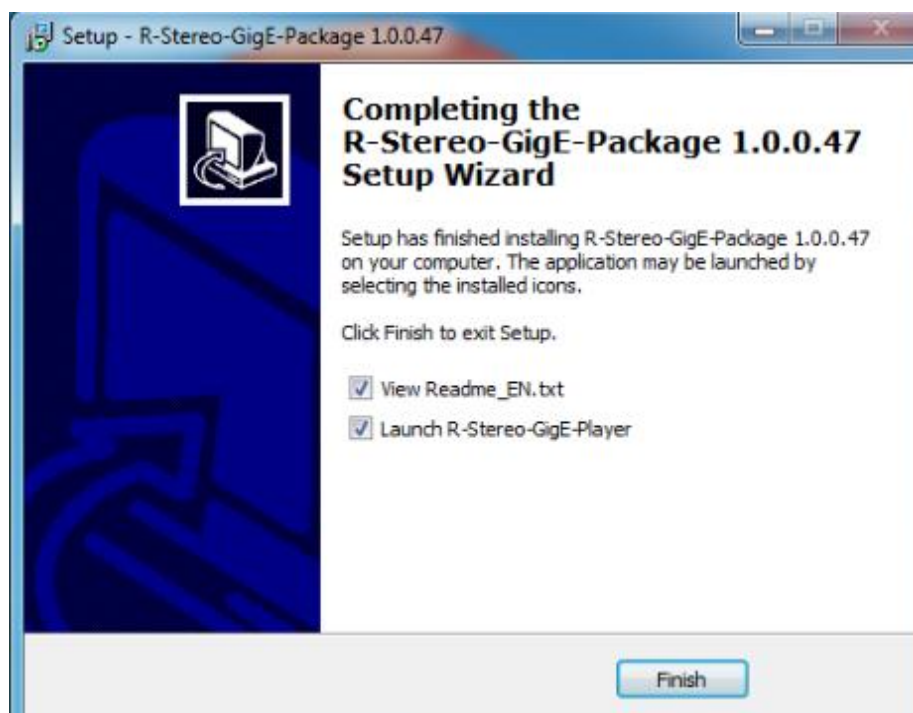


4.1.8 Click the Install button to start the installation.





4.1.9 When the following dialog box appears, the installation is complete.



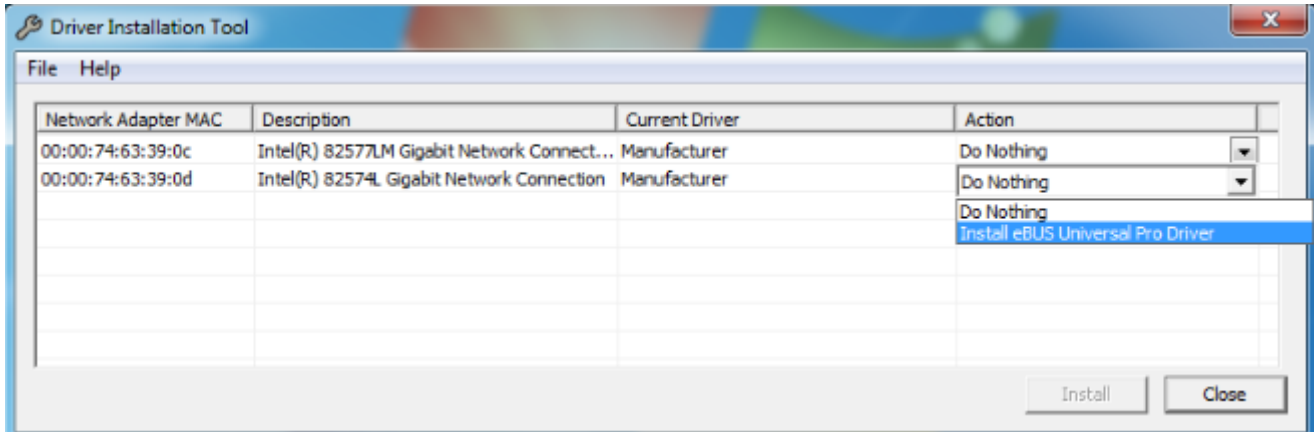
## 4.2 Installing eBUS Universal Pro Driver

4.2.1 Select "Start" - "All Programs" - "R-Stereo-GigE-Package X.X.X.XX" - "Maintenance" - "Install Driver."

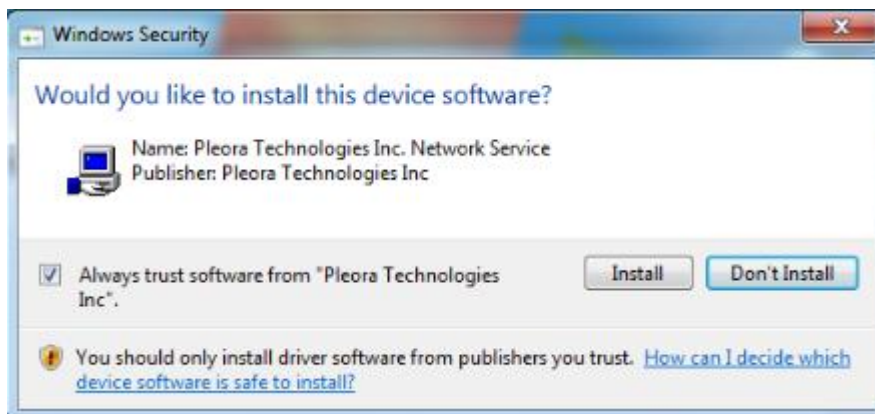
4.2.2 The following dialog box appears.

Specify "Install eBUS Universal Pro Driver" for the Action item of the network adapter for connecting with the camera.

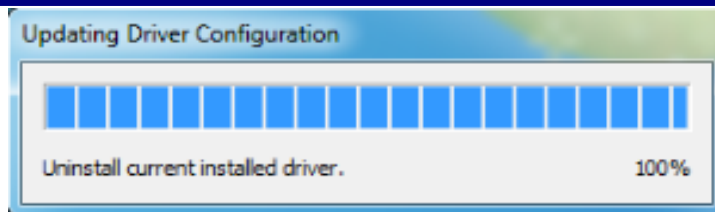
After making the selection, click the Install button.



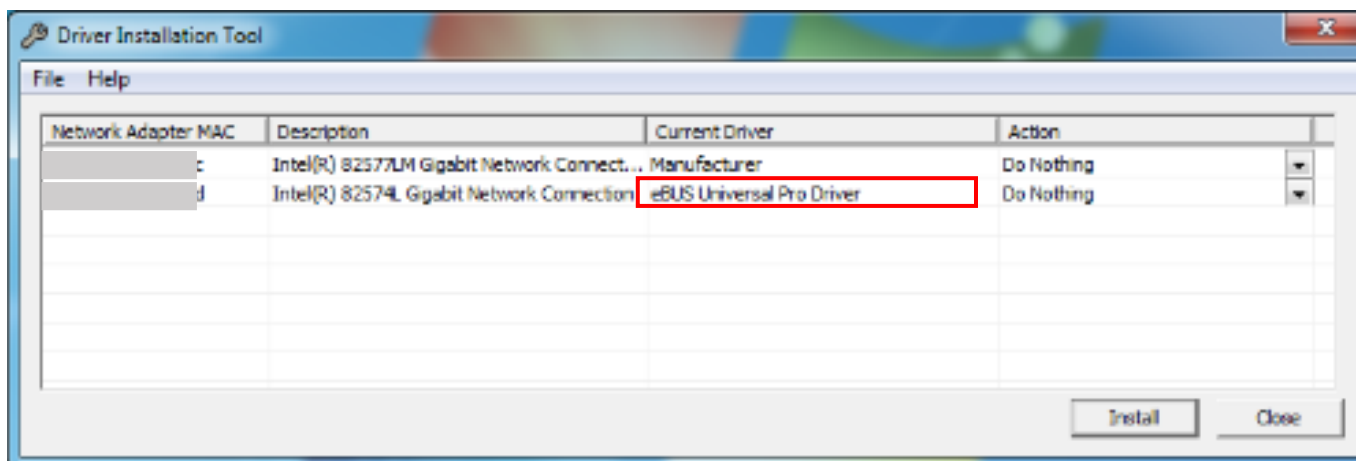
A dialog box for confirming the installation of the driver software is displayed by Windows after you click "Install." Select the "Always trust software from Pleora Technologies Inc." check box and then click "Install."



The installation progress is indicated by the progress bar.



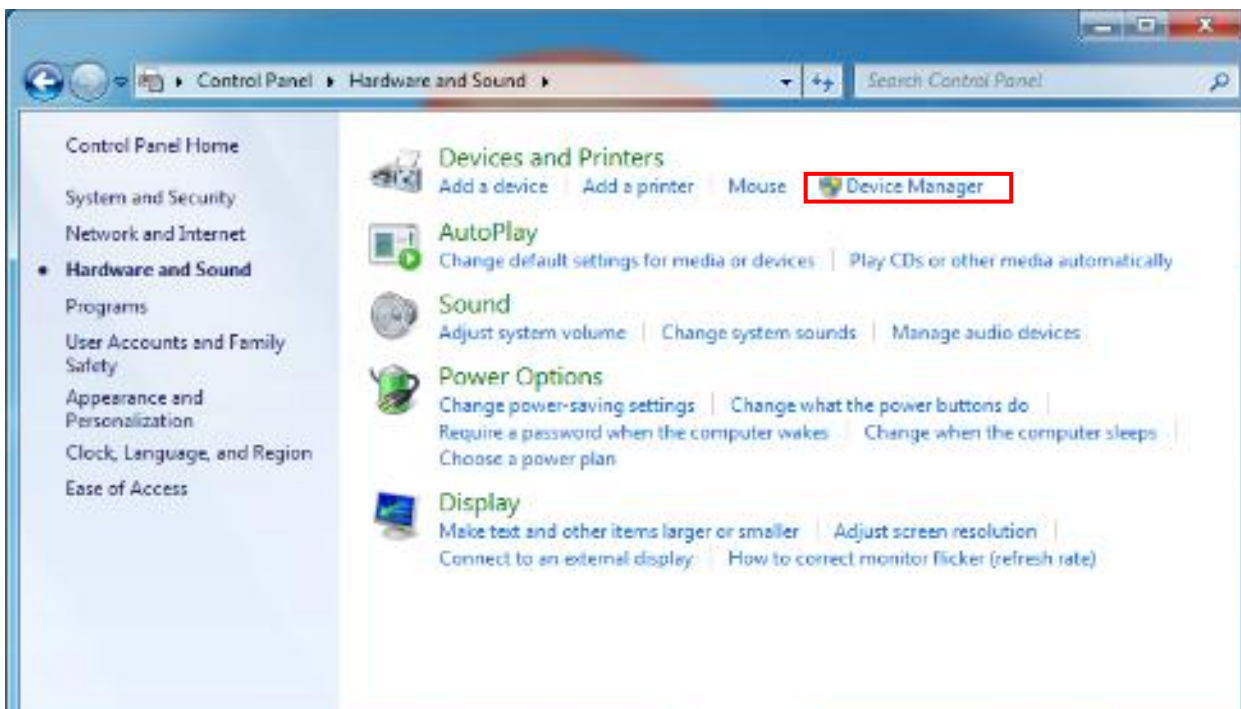
4.2.3 When the Current Driver item is updated to "eBUS Universal Pro Driver," the installation is complete.



## 5. Windows Settings

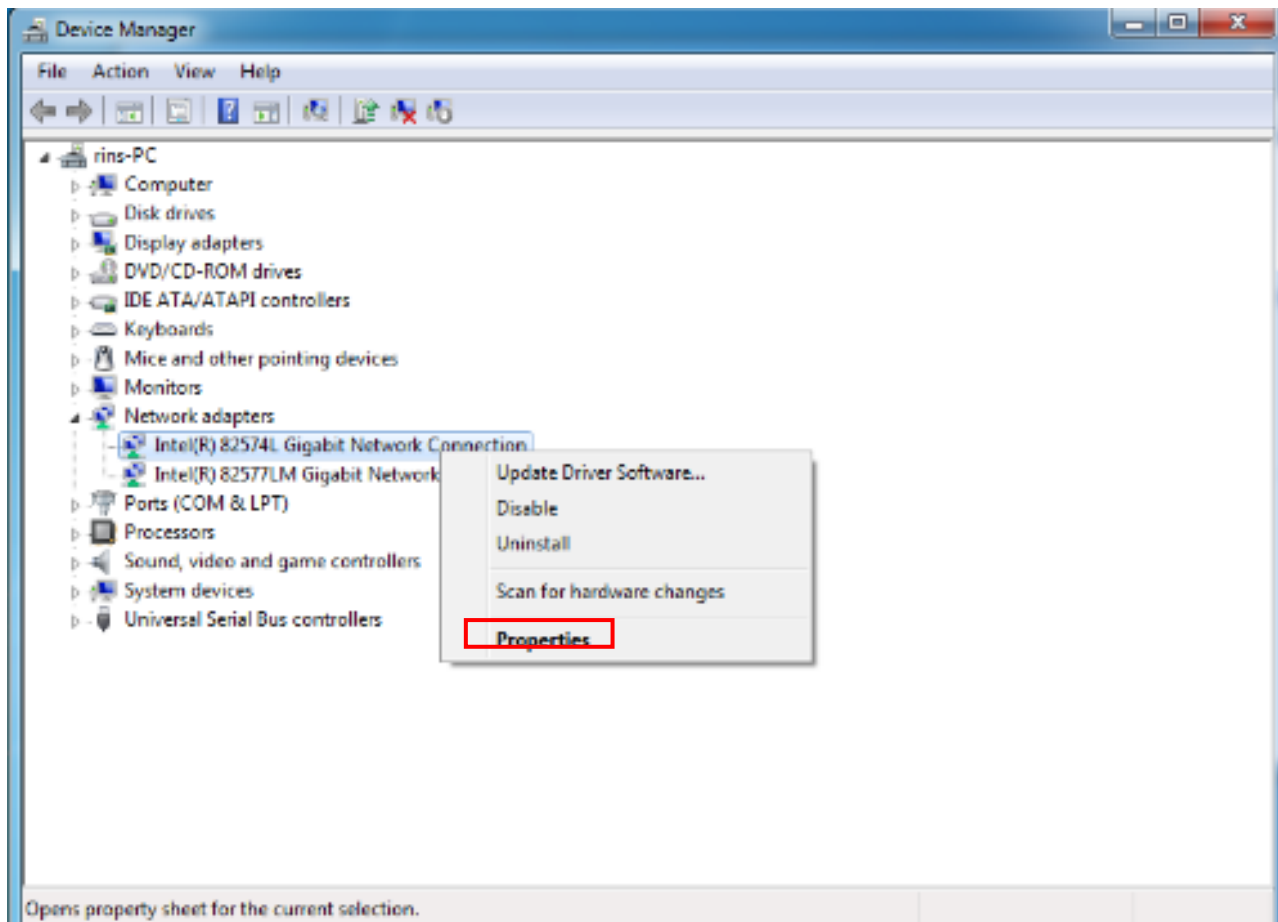
5.1 Select "Start" - "Control Panel" to open Control Panel.

5.2 Select "Hardware and Sound" - "Device Manager."



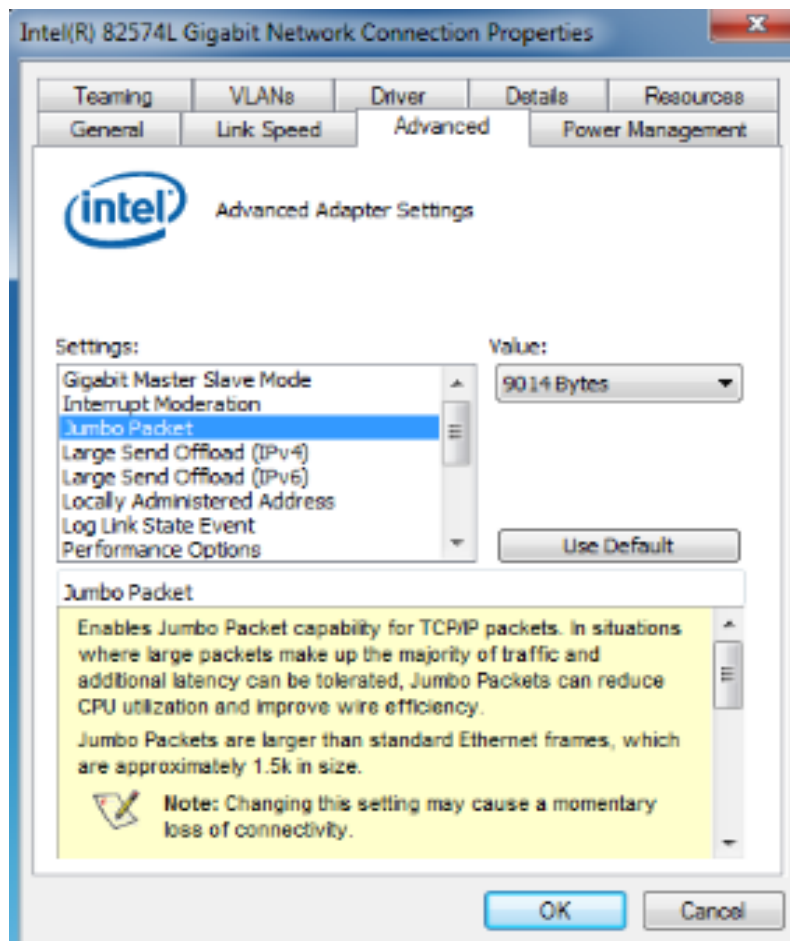
5.3 When the Device Manager dialog box opens, right-click the network adapter for connecting with the camera under "Network adapters."

When the menu appears, select "Properties."



5.4 When the properties dialog box of the network adapter opens, select the Advanced tab. Next, select the "Jumbo Packet" or "Jumbo Packet"\* item under "Property." Specify "9 KB" or "9014 Bytes" for the value.

\* The indication may differ depending on the network adapter you use. You may not be able to set 9 KB. If not, set the highest value you can set.



The settings are now complete.

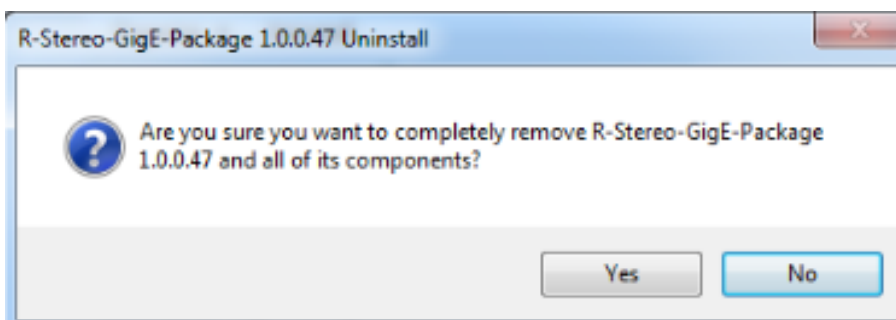
## 6 Uninstallation Procedure

### 6.1 Uninstalling R-Stereo-GigE-Package

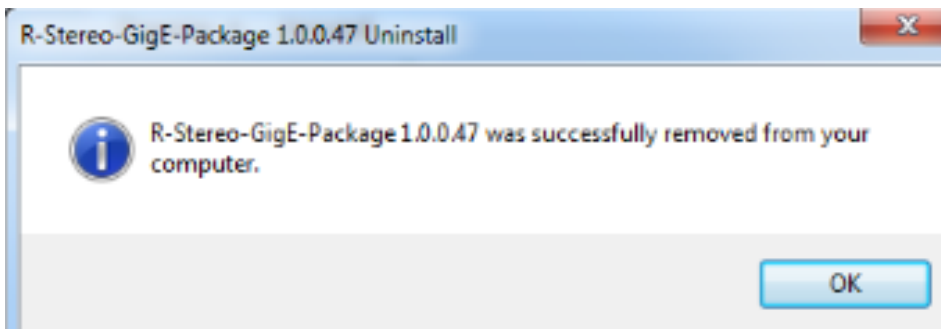
Note: If you also wish to uninstall the driver, perform the procedure described in "6.2 Uninstalling eBus Universal Pro Driver" before you uninstall R-Stereo-GigE-Package.

6.1.1 Select "Start" - "All Programs" - "R-Stereo-GigE-Package X.X.X.XX" - "Maintenance" - "Uninstall R-Stereo-GigE-Package."

6.1.2 When the following dialog box opens, click the Yes button.



6.1.3 When the following dialog box appears, the uninstallation is complete.



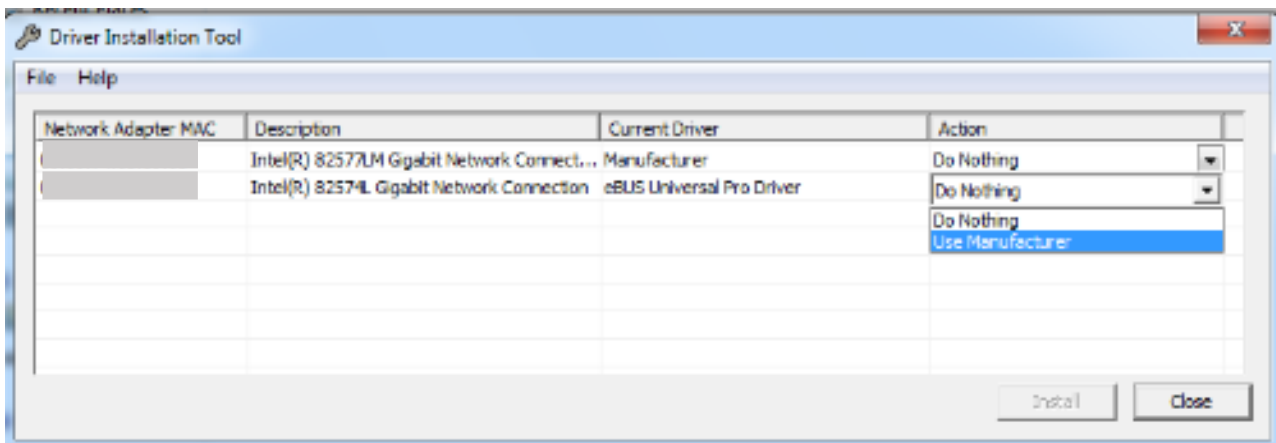
## 6.2 Uninstalling eBUS Universal Pro Driver

6.2.1 Select "Start" - "All Programs" - "R-Stereo-GigE-Package X.X.X.XX" - "Maintenance" - "Install Driver."

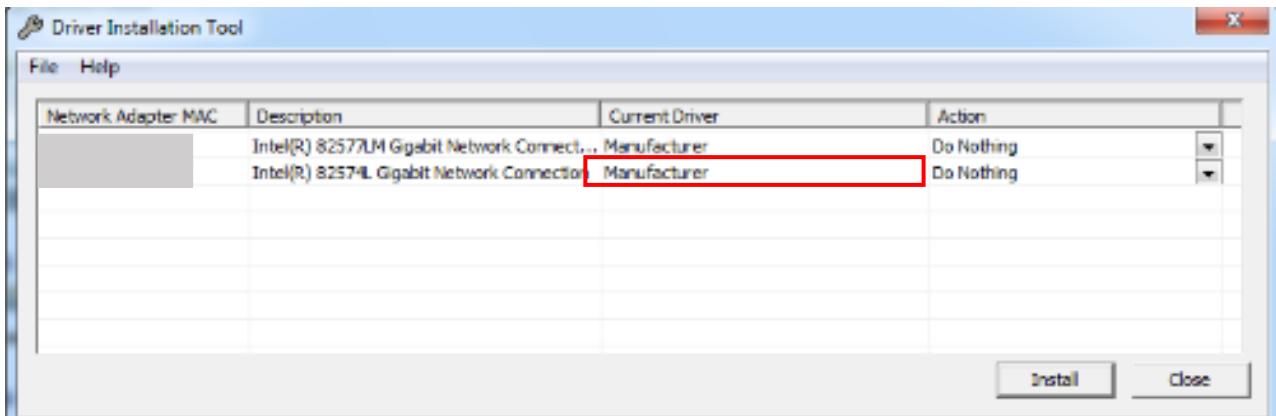
6.2.2 The following dialog box appears.

Specify "Use Manufacturer" for the Action item of the network adapter for which eBUS Universal Pro Driver is installed.

After making the selection, click the Install button.



6.2.3 When the Current Driver item is updated to "Manufacturer," the uninstallation is complete.





---

## Revision History

Rev.	Date	Changes	Note
1.00	March 24, 2015	● Newly created	