

TrueType Font Terms

The Terms Used in This Catalogue

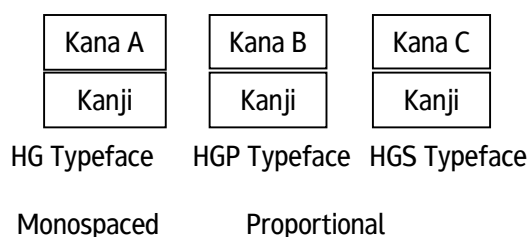
◇ **TTF Format (TrueType Font Format)**

File format with one typeface in one file.
It is often used for monospaced font.

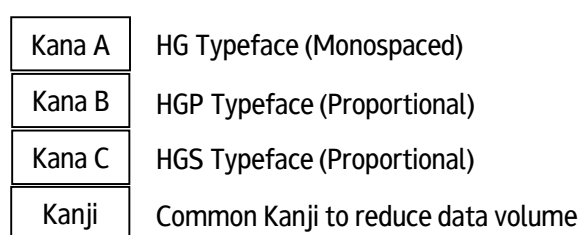
◇ **TTC Format (TrueType Collection Format)**

File format with plural typefaces in one file.
It is often used for monospaced font and proportional font.

TTF Format: 1 file = 1 typeface



TTC Format: 1 file = plural typefaces



◇ **Monospaced Font**

A constant width is defined for all characters.
Example: "MS Mincho", "MS Gothic", etc.

◇ **Proportional Font**

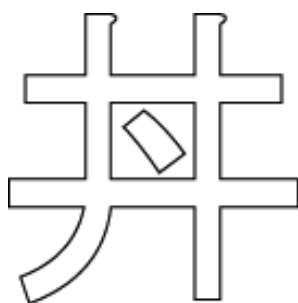
A different width is defined every characters.
Example: "MS PMincho", "MS PGothic", etc.

◇ **Full Outline System Font**

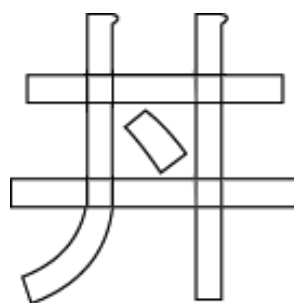
Character form as an outline, a string of contour.
It is suitable for precise design.
RICOH's TrueType font is one of full outline system fonts.

◇ **Element System Font**

One of outline system fonts by combining strokes like vertical lines and horizontal lines.
Sharing of a stroke for as many as possible characters can save data volume.
RICOH's "RT Font" is one of element system fonts.



Full Outline System Font

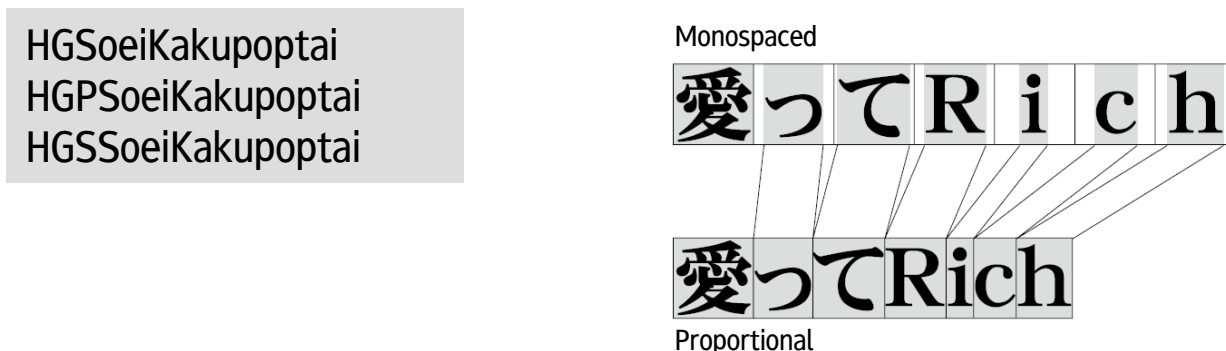


Element System Font

TrueType Font Terms

◇HG Typeface, HGP Typeface, HGS Typeface 1/2

There are three types of even same typeface because of their pitch difference.



In general, "HGP" indicates proportional font.
The differences are as follows.

"HG ~" All characters are displayed with a monospaced character width.

"HGP~" 1-byte characters and non-kanji (hiragana and katakana) are designed to be proportional.

"HGS~" 1-byte characters are designed to be proportional

HG, HGP and HGS Typefaces Comparison Sample

	1-byte characters katakana	2-byte characters Full-width hiragana, katakana, alphanumerical character
HGSoeiKakupo tai	12345アイウエオ	アイウエオいろはにほへと%&愛ってR i c h
HGPSoeiKakupo tai	12345アイウエオ	アイウエオいろはにほへと%&愛ってRich
HGSSoeiKakupo tai	12345アイウエオ	アイウエオいろはにほへと%&愛ってR i c h

HG width is imagined as the longest in case of the length comparison for the same sentence. But HGS typeface might be longer than HG as shown above. The reason is why a half width character of proportional typeface might be approximately 2/3 of a full width at most.

The design of proportional typeface is different from that of HG to make it legible.
The proportional pitch characters used in HGP and HGS are shown in the next page.
Choose them you need.

Features

◇TrueType Font

It is the font format developed by Apple Inc.

It has been adopted in Japan since Windows® 3.1J OS by Microsoft Corporation.

"MS Mincho" and "MS Gothic" bundled with Windows® OS are TrueType font as well.

TrueType font is supported by many operating systems such as UNIX®, Linux® and so on.

◇Outline Font

Outline font is a collection of character outline.

Character outline is drawn first, and then its inside is filled in.

Because its expansion, reduction and transformation are executed against contour, clean characters can be displayed without jaggy.

Contour drawing and its inside filling are executed by rasterizer as a standard embedded in OS that support TrueType font such as Windows® OS . However in the case of its use for embedded systems except for described OS, customer have to prepare it by themselves. (It is not always necessary for OS that supports TrueType font)

◇TrueType Font Stored with Bitmap Font

TrueType font can store bitmap font.

Whenever bitmap font is stored, bitmap font is supposed to display prior to outline data rasterizer usually deals with.

"MS Mincho" and "MS Gothic" internally store bitmap {10, 12, 13, 14, 16, 18, 20 dots}

*13 dot bitmap has been stored since Windows Vista® as well.

アウトラインフォントの表示	24x24 dots outline display
アウトラインフォントの表示	20x20 dots bitmap display
アウトラインフォントの表示	18x18 dots bitmap display
アウトラインフォントの表示	16x16 dots bitmap display
アウトラインフォントの表示	14x14 dots bitmap display
アウトラインフォントの表示	13x13 dots bitmap display
アウトラインフォントの表示	12x12 dots bitmap display
アウトラインフォントの表示	10x10 dots bitmap display

Example : "MS Gothic" Display

"MS Mincho" and "MS Gothic" are RICOH offers to Microsoft Corporation.

"MS Mincho" and "MS Gothic" normally bundled with Windows® OS since Windows® 3.1 are created and provided by RICOH.

Equivalent products "HG Mincho L" and "HG Gothic B" in Linux® OS are normally bundled as well.

RICOH's Mincho and Gothic have mysterious charm naturally accepted by many people without knowing.

Features

◇ Advantages of TrueType Font for Embedded Systems

Generally speaking, rasterizer must be embedded on the operating system to install outline font. However a user can skip the rasterizer installation when embedded system is based on Windows® OS. Because Windows® OS have already embedded rasterizer inside. In addition, stored bitmap font improves display quality especially for small sizes.

◇ Disadvantage of TrueType Font in Embedded System

RICOH's TrueType font is full outline system font like "MS Mincho" and "MS Gothic". One of features is precise display. On the other hand data volume tends to be larger. The volume is much bigger in case of bitmap storage.

◇ Tips for TrueType Font in Embedded System

(1) Data Volume Reduction by Bitmap Size Selection

Data volume can be controlled by selecting fewer sizes. In addition, the volume can be reduced further by selecting specific characters like non-kanji or hiragana. This is applied to "menu" to display frequently used characters as bitmap. It is also possible to select bitmap font in accordance with usage and purposes. For example, only complicated kanji is displayed as bitmap.

(2) Data Volume Reduction by Outline Data Reduction

When you load bitmap font only by deleting all outline data, nothing will be displayed for sizes without bitmap. It sounds meaningless, but this is often used as follow..

When the character size of "menu" is specified by "large" or "small", only two sizes need to be displayed. Two sizes are sufficient.

Both " the elimination of rasterizer newly installation" by pre-installed rasterizer for TrueType font and "data volume reduction" by fewer sizes are attained by this method.

(3) Data Volume Reduction by Deleting Hinting Data

TrueType font includes hinting data for correcting uneven line width to improve legibility when displaying at low resolution. By deleting it, data volume can be reduced.

Request Support

Please feel free to contact us if you have any request for fonts.
It can be not only specific requests, but this kind of feeling.
We will do our best to propose your optimal solution.

[Support Example]

◇Foreign Languages No Other Than Those Listed

For languages and typefaces no other than those listed in this site, please contact us.
We will create these languages you need.

◇Characters Additions

– ARIB Addition to the standard characters

We prepare 536 characters as ARIB standard characters.

– Addition and replacement of kanji outside of the common kanji list (167 characters)

We prepare 167 characters in CP932 out of 168, example character form transformed in JIS X 0213: 2004

NOTE: We are newly producing kanji outside of the common kanji list.
Please inquire us.

– Addition and replacement of requested character like original characters

We prepare these characters as easily legible ones.

(Example)

The design in smaller size becomes more similar such as the number zero and alphabet O.

RICOH makes the number zero horizontally longer and the alphabet O rounder. It is effective to add the slush to the number zero as well.

How to Look at the Lineup

How to see the lineup starting P.11 –19.

Typeface	Format		Character set	File size (KB)		PDF embedded Setting
				TTF	TTC	
HGMinchoL	TTF	TTC	CP932	3,131	3,552	Preview & Print

[Name of Typeface] "HGMinchoL" indicates TTF format (Monospaced font).
If you see TTC beside TTF, the typeface includes proportional font "HGPMinchoL" and "HGSMinchoL" as well.

[Format] TTF: monospaced font only
TTC: proportional font and monospaced font

[Character Set] See the table below for details
Character encoding scheme is Unicode® encoding.

Language	Character Set	Total Characters
Japanese	JIS X 0208–1990 – JIS X 0201 (Half-width; 158 characters) – JIS X 0208 (Non-Kanji ; 524 characters) – JIS X 0208 (Kanji Level 1; 2,965 characters) – JIS X 0208 (Kanji Level 2; 3,390 characters) – Characters for vertical writing (53 characters)	7,090
	CP932 – JIS X 0201 (Half-width; 158 characters) – JIS X 0208 (Non-Kanji; 524 characters) – JIS X 0208 (Kanji Level 1; 2,965 characters) – JIS X 0208 (Kanji Level 2; 3,390 characters) – NEC special (83 characters) – NEC selected IBM® extension (374 characters) – IBM extension (388 characters) – Characters for vertical writing (108 characters)	7,592 The total number of characters in the list on the left is 7,990. But, in Unicode encoding, overlapping 398 characters are consolidated, making the total number of characters 7,592.
	CP932 + JIS X 0213: 2004 – CP932 (7,592 characters) – JIS X 0213 (Non-Kanji; 575 characters) – JIS X 0213 (Kanji Level 3; 1,071 characters) – JIS X 0213 (Kanji Level 4; 2,348 characters) * The number of JIS x 0213 characters equals to the addition from that of CP932.	11,586
	MS Mincho, MS Gothic up to Windows® XP OS – CP932 (7,592 characters) – JIS X 0212 and WGL4 (7,562 characters)	15,154
	MS Mincho, MS Gothic for Windows Vista® OS and Windows® 7 – CP932 (7,592 characters) – Supplementary kanji WGL4 (7,560 characters) – JIS X 0213 level 3 kanji, level 4 kanji Monetary code (Total 1,277 characters) * Total 1,277 characters equals to the addition from that of CP932, JIS X 0212 and WGL4.	16,429

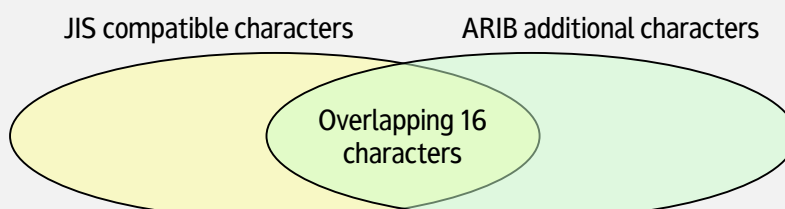
How to Look at the Lineup

Language	Character Set	Total characters
Japanese	ARIB STD-B24 (6.1 version) – JIS X 0201 (Half-width; 158 characters) – JIS X 0208 (Non-Kanji; 524 characters) – JIS X 0208 (Kanji Level 1; 2,965 characters) – JIS X 0208 (Kanji Level 2; 3,390 characters) – ARIB Additional code (394 characters) – ARIB Additional kanji (137 characters) – Characters for vertical writing (97 characters)	7,665
OCR system	JIS X 9010-1984 (OCR-B basic, OCR-K) – JIS X 9001: from character form for optical character recognition (Alphanumerical: 102 characters), OCR-B basic – JIS X 9003: character form for optical character recognition (katakana: 68 characters), OCR-K HGOOCR-B : 1-byte Alphanumerical only HGOOCR-BK : 1-byte Alphanumerical, 2-byte katakana HGOOCR-BK-W : 1-byte Alphanumerical, 2-byte code + katakana, 2-byte (full size domain) Alphanumerical, 2-byte(half size domain) katakana	100 (HGOOCR-B) 157 (HGOOCR-BK) 315 (HGOOCR-BK-W)
	JIS X 9006: Character form for optical character recognition (Number of characters: 10 characters)	10
	JIS X 6302-1:2005	10
Barcode system	CODE39 – JIS X 0503: 2000 Barcode symbol code 39 basic specifications	44
	CODE128 – JIS X 0504: 2003 Barcode symbol code 128 basic specifications	44
	NW-7 – JIS X 0506: 2000 Barcode symbol codabar (NW-7)	24
	Postal office customer bar code (Postal office customer barcode basic specifications)	21

<ARIB STD-B24 (6.1 Version)>

16 characters in Unicode encoding are overlapping between JIS character and ARIB character. RICOH offers four kinds of TTF format for all characters to be used.

- PJ: File for JIS compatible characters only (7,090 characters)
- PA: File for ARIB additional characters only (536 characters)
- EJ: File for JIS compatible characters + ARIB additional characters (Overlapping 16 characters are JIS character form, 7,665 characters)
- EA: File for JIS compatible characters + ARIB additional characters (Overlapping 16 characters are ARIB character form, 7,665 characters)



How to Look at the Lineup

Language	Character Set	Total characters
European	ISO 8859-1	191
	ISO 8859-2	191
	ISO 8859-5	191
	ISO 8859-7	188
	ISO 8859-9	191
	ISO 8859-15	191
	ISO 8859-1, 2, 5, 7, 9, 15 Integrated set	425
	CP1252	219
	CP1250, CP1251, CP1252, CP1254 Integrated set	371
Simplified Chinese characters	GB18030-2005 Mandatory part (Certified by the Chinese Government)	28,522
Traditional Chinese characters	CP950	13,588 (Including overlapping)

[File size]

File volume of TTF format and TTC format.

[PDF Embedding Setting]

Font embedding authorization in electronic document like PDF

"Preview & Print" : Embeddable in PDF file

"Restricted" : No Embeddable in PDF file

TrueType Font Embedding Authorization in PDF File

Font embedding authorization in PDF file depends on that of TrueType font.

RICOH's TrueType font is set for either "Embedding is allowed (Preview & Print)" or "Restricted".

◇ Specifications of TrueType font regarding embedding

– "Restricted"

Font cannot be embedded.

– "Preview & Print"

Embedding is allowed for characters (part of the font) used in a document.

They can be displayed and printed correctly on PC in which the said font is not installed.

– "Editable"

Embedding of all characters in the font used in a document is allowed.

In addition to display and print, editing is possible by using characters even not displayed when the document is created.

TrueType Font Lineup

Mincho

Typeface	Format		Character set	File size (KB)		PDF embedded Setting
				TTF	TTC	
HGMinchoL	TTF	TTC	CP932	3,131	3,553	Preview & Print
HGMinchoB	TTF	TTC		3,206	3,642	
HGMinchoE	TTF	TTC		3,574	4,018	
HGHeiseiMinchotaiW3	TTF	TTC		2,988	3,435	
HGHeiseiMinchotaiW9	TTF	TTC		3,197	3,663	
HGHeiseiMinchotaiW9L	TTF	-		3,595	-	
HGHeiseiMinchotaiW9S	TTF	-		3,526	-	
HGSoeiPresenceEB	TTF	TTC		2,299	2,655	
HGElegantHeiseiMinchotaiW3	TTF	-		2,982	-	Restricted License

Gothic

Typeface	Format		Character set	File size (KB)		PDF embedded Setting
				TTF	TTC	
HGNewGothicM	TTF	TTC	CP932	2,379	2,693	Preview & Print
HGGothicM	TTF	TTC		2,481	2,803	
HGGothicB	TTF	TTC		2,562	2,632	
HGGothicE	TTF	TTC		1,926	2,212	
HGHeiseiKakugothictaiW3	TTF	TTC		2,376	2,720	
HGHeiseiKakugothictaiW5	TTF	TTC		2,488	2,560	
HGHeiseiKakugothictaiW7	TTF	TTC		2,268	2,596	
HGHeiseiKakugothictaiW9	TTF	TTC		2,215	2,533	
HGHeiseiKakugothictaiW9L	TTF	-		2,825	-	
HGHeiseiKakugothictaiW9S	TTF	-		2,354	-	
HGHidemiHeiseikakugow9	TTF	-		2,226	-	
HGHidemiHeiseikakugow9L	TTF	-		2,835	-	
HGHidemiHeiseikakugow9S	TTF	-		2,372	-	
HGSoeiKakugothicL	TTF	TTC		2,309	2,635	
HGSoeiKakugothicUB	TTF	TTC		1,645	1,912	
HGMetalKakugothicE	TTF	TTC		4,377	4,865	
HGInlainKakugothicH	TTF	TTC		2,902	3,330	
HGKasaneKakugothicH	TTF	TTC		1,749	2,050	
HGTEKakugothicU	TTF	TTC		1,571	1,825	
HGHappyGothicM	TTF	-		2,485	-	Restricted License
HGHappyGothicB	TTF	-		2,358	-	
HGHappyGothicE	TTF	-		1,929	-	

* [HGNewGothicM](#) corresponds to the universal design (UD).

Round Gothic

Typeface	Format		Character set	File size (KB)		PDF embedded Setting
				TTF	TTC	
HGMarugothicL	TTF	TTC	CP932	4,235	4,644	Preview & Print
HGMarugothicM	TTF	TTC		3,859	4,278	
HGMarugothicB	TTF	TTC		3,727	4,132	
HGHeiseiMarugothictaiW4	TTF	TTC		3,807	4,242	
HGHeiseiMarugothictaiW8	TTF	TTC		3,701	4,171	
HGHeiseiMarugothictaiW8L	TTF	-		5,193	-	
HGHeiseiMarugothictaiW8S	TTF	-		5,152	-	
HGAKaneHeiseiMarugow8	TTF	-		3,653	-	
HGAKaneHeiseiMarugow8L	TTF	-		5,192	-	
HGAKaneHeiseiMarugow8S	TTF	-		5,154	-	
HGREithic	TTF	TTC		4,109	4,593	
HGBouquet	TTF	TTC		4,096	4,592	
HGSoeiMarugothicL	TTF	TTC		3,667	4,094	
HGTEMarugothicU	-	TTC		-	2,902	
HGInlainMarugothicE	TTF	TTC		4,427	4,995	
HGKasaneMarugothicH	TTF	-		3,306	-	
HGKyapiMarugothicM	TTF	-		3,860	-	Restricted License
HGKyapiMarugothicB	TTF	-		3,724	-	

TrueType Font Lineup

Pop

Typeface	Format		Character set	File size (KB)		PDF embedded Setting
	TTF	TTC		TTF	TTC	
HGSoeiKakupoptai	TTF	TTC	CP932	1,807	2,105	Preview & Print
HGSoeiMarupoptai	TTF	TTC		3,071	3,459	
HGPrettyFrankH	TTF	-		2,208	-	
HGPrettyFrankHL	TTF	-		2,996	-	
HGPrettyFrankHS	TTF	-		2,988	-	

Brush style

Typeface	Format		Character set	File size (KB)		PDF embedded Setting
	TTF	TTC		TTF	TTC	
HGGyoshotai	TTF	TTC	CP932	4,063	4,476	Preview & Print
HGSeikaishotai	TTF	TTC		4,098	4,534	
HGKaishotai	TTF	TTC		4,106	4,541	
HGKyokashotai	TTF	TTC		4,232	4,645	
HGHanKointai	TTF	TTC		4,371	4,888	
HGGyokoku	TTF	TTC		3,502	3,852	
HGSoeiFutokaishotai	TTF	TTC		3,513	3,934	
HGSoeiReishotai	TTF	TTC		3,776	4,208	
HGSoeiFutoReishotai	TTF	TTC		3,769	4,203	
HGSoeilorishotai	TTF	TTC		3,906	4,371	
HGARisawaKaishotai	TTF	TTC		3,456	3,854	
HGSyounanGyoshotai	TTF	TTC		3,496	3,879	
HGSyounGyoshotai	TTF	TTC		3,574	3,977	
HGTakahashiFudekaishotai	TTF	-		3,216	-	
HGTakahashiReishotai	TTF	-		3,037	-	
HGHakushuFutoKaishotai	TTF	TTC		5,900	6,479	
HGHakushuSekitokaishotai	TTF	TTC		4,518	5,046	
HGHakushuGokubutoKaishotai	TTF	TTC		6,991	7,615	
HGHakushuGyososhotai	TTF	TTC		5,959	6,509	
HGHagoromoL	TTF	-		4,702	-	
HGHagoromoM	TTF	-		4,706	-	
HGHagoromoB	TTF	-		4,537	-	
HGHagoromoE	TTF	-		4,525	-	
HGKyokusuiM	TTF	-		4,816	-	
HGKyokusuiE	TTF	-		4,677	-	
HGKisimotoKaishotai	TTF	TTC		3,530	3,972	
HGSekiReishotai	TTF	TTC		3,912	4,353	
HGSekiEngeimoji	TTF	-		4,265	-	
HGSumoumoji	TTF	TTC		3,453	3,894	
HGHigemoji	TTF	TTC		6,850	7,777	
HGKagoji	TTF	TTC		3,861	4,357	
HGOzawaKaishotai	TTF	TTC		3,786	4,250	
HGEDomomijiKanteiryu	TTF	TTC	3,809	4,333		
HGTenshotai	TTF	-	JIS X 0201 JIS X 0208 (Excluding level 2)	1,983	-	

Pen writing

Typeface	Format		Character set	File size (KB)		PDF embedded Setting
	TTF	TTC		TTF	TTC	
HGSoeiPenjitai	TTF	TTC	CP932	3,468	3,858	Preview & Print
HGSoeiBifutoPenjitai	TTF	TTC		3,353	3,727	
HGChibaPenjitai	TTF	-		2,983	-	
HGHakushuPengooshotai	TTF	TTC		4,998	5,484	
HGHakushuPenkaishotai	TTF	TTC		4,970	5,466	

ARIB version

Typeface	Format		Character set	File size (KB)		PDF embedded Setting
	TTF	-		TTF	TTC	
HGAREJHeiseiKakugothictaiW5	TTF	-	ARIB STD-B24	2,205	-	Preview & Print
HGAREJHeiseiMarugothictaiW4	TTF	-		3,739	-	
HGAREJHeiseiMarugothictaiW8	TTF	-		3,620	-	

TrueType Font Lineup

PRO version *Proportional for Alphanumerical only (Different from HGS typeface as well)

Typeface	Format		Character set	File size (KB)		PDF embedded Setting
				TTF	TTC	
HGMinchoLPRO	TTF	-	CP932	3,133	-	Preview & Print
HGMinchoBPRO	TTF	-		3,202	-	
HGNewGothicMPRO	TTF	-		2,380	-	
HG GothicBPRO	TTF	-		2,360	-	
HG GothicEPRO	TTF	-		1,926	-	
HGMaruGothicMPRO	TTF	-		3,860	-	
HGReithicPRO	TTF	-		4,108	-	
HGSGyohotaiPRO	TTF	-		4,062	-	
HGSeikaishotaiPRO	TTF	-		4,100	-	
HGSoeiPresenceEBPRO	TTF	-		2,299	-	
HGSoeiMarupoptaiPRO	TTF	-		3,070	-	
HGSoeiReishotaiPRO	TTF	-		3,777	-	

* [HGNewGothicMPRO](#) corresponds to the universal design (UD).

OCR

Typeface	Format		Character set	File size (KB)		PDF embedded Setting
				TTF	TTC	
HGShuzanSuuji	TTF	-	Full-width number Half-width number	126	-	Preview & Print
HGO CR-B	TTF	-	JIS X 9010 -1984 OCR-B Basic	13	-	
HGO CR-BK	TTF	-	JIS X 9010 -1984 OCR-B Basic OCR-K	147	-	
HGO CR-BK-W	TTF	-		166	-	
HGO CR-HN	TTF	-	JIS X 9006	130	-	
HGO CR-HN	TTF	-	JIS X 6302 -1:2005	6	-	

Extended character font

Typeface	Format		Character set	File size (KB)		PDF embedded Setting
				TTF	TTC	
HGMinchoLKakuchōSTB	TTE	-	Extended characters Selected by Ricoh	486	-	Preview & Print
HG GothicBKakuchōSTB	TTE	-		378	-	
HGSeikaishotaiKakuchōSTB	TTE	-		524	-	

Graphic font

Typeface	Format		Character set	File size (KB)		PDF embedded Setting
				TTF	TTC	
GFGraphicFubutsu	TTF	-	-	669	-	Preview & Print
GFSoeiPopillust	TTF	-	-	397	-	
GFllustcut	TTF	-	-	1,605	-	

Barcode

Typeface	Format		Character set	File size (KB)		PDF embedded Setting
				TTF	TTC	
HGCODE39	TTF	-	CODE39	9	-	Preview & Print
HGCODE128	TTF	-	CODE128	10	-	
HGCODENW7	TTF	-	NW-7	6	-	
HGCODEPOS2	TTF	-	Postal service customer barcode	6	-	

TrueType Font Lineup

European

Typeface	Format		Character set	File size (KB)		PDF embedded Setting
				TTF	TTC	
HGTU Sans Medium Halfwidth	TTF	–	ISO 8859–1	26	–	Preview & Print
	TTF	–	ISO 8859–2	34	–	
HGTU Sans Medium	TTF	–	CP1250, CP1251, CP1252, CP1253, CP1254 Integrated file	58	–	
HGMR Sans Bold	TTF	–	ISO 8859–1	26	–	
HGMR Serif Light	TTF	–	ISO 8859–1	36	–	
HGUM Sans Medium Condensed	TTF	–	CP1250, CP1251, CP1252, CP1254 Integrated file	76	–	
HGUM Sans Medium	TTF	–		78	–	
HGUM Sans Medium Extended	TTF	–		78	–	
HGUM Sans Bold	TTF	–		79	–	
HGUM Sans Bold Extended	TTF	–		78	–	

* HGUM Sans corresponds to the universal design (UD).

Simplified chinese characters (Certified by the Chinese Government)

Typeface	Format		Character set	File size (KB)		PDF embedded Setting
				TTF	TTC	
HGJHeiM Simplified	TTF	–	GB18030 –2005 Mandatory part	7,135	–	Preview & Print

Traditional chinese characters

Typeface	Format		Character set	File size (KB)		PDF embedded Setting
				TTF	TTC	
HGJHeiM Traditional	TTF	–	CP950	4,960	–	Preview & Print

MS Mincho, MS Gothic equivalent

Typeface (Ver)	Format		Character set	File size (KB)		PDF embedded Setting
				TTF	TTC	
HGMinchoL (Ver.4.80)	–	TTC	MS Mincho MS Gothic Up to Windows® XP OS	–	8,922	Preview & Print
HGGothicB (Ver.4.80)	TTF	TTC		7,141	7,194	
HGMinchoL (Ver.5.01)	TTF	TTC	MS Mincho MS Gothic Windows Vista® OS and Windows® 7 OS	9,704	9817	Preview & Print
HGGothicB (Ver.5.01)	TTF	TTC		7,844	7964	

* HGS typeface is not included in TTC format file (HG and HGP only)

* Ver.4.80 contains the total of 6 sizes of Bitmap font (10,12,14,16,18,20 dots)

* Ver.5.00 contains the total of 7 sizes of Bitmap font (10,12,13,14,16,18,20 dots)

Microsoft® Office Bundle typeface

Typeface	Format		Character set	File size (KB)		PDF embedded Setting		
				TTF	TTC			
HGSeikaishotaiPRO	TTF	–	CP932	4,100	–	Preview & Print		
HGMaruGothicMPRO	TTF	–		3,860	–			
HGMinchoB	–	TTC		–	3,642			
HGMinchoE	–	TTC		–	4,018			
HGGyoshotai	–	TTC		–	4,476			
HGKyokashotai	–	TTC		–	4,645			
HGGothicM	–	TTC		–	2,803			
HGGothicE	–	TTC		–	2,212			
HGSoeiKakupoptai	–	TTC		–	2,105			
HGSoeiKakugothicUB	–	TTC		–	1,912			
HGSoeiPresenceEB	–	TTC		–	2,655			
HGMaruGothicMPRO	TTF	–		CP932 + JIS X 0213 :2004	6,711		–	Preview & Print
HGMinchoE	–	TTC			–		6,940	
HGGothicE	–	TTC			–		3,785	
HGSoeiKakupoptai	–	TTC	–		3,605			
HGSoeiKakugothicUB	–	TTC	–		3,303			

TrueType Font Typeface Sample

Mincho

Typeface	Sample Image
HGMinchoL	愛の広がる美しいフォント
HGMinchoB	愛の広がる美しいフォント
HGMinchoE	愛の広がる美しいフォント
HGHeiseiMinchotaiW3	愛の広がる美しいフォント
HGHeiseiMinchotaiW9	愛の広がる美しいフォント
HGHeiseiMinchotaiW9L	愛の広がる美しいフォント
HGHeiseiMinchotaiW9S	愛の広がる美しいフォント
HGSoeiPresenceEB	愛の広がる美しいフォント
HGElegantHeiseiMinchotaiW3	愛の広がる美しいフォント

Gothic

Typeface	Sample Image
HGNewGothicM	愛の広がる美しいフォント
HGGothicM	愛の広がる美しいフォント
HGGothicB	愛の広がる美しいフォント
HGGothicE	愛の広がる美しいフォント
HGHeiseiKakugothictaiW3	愛の広がる美しいフォント
HGHeiseiKakugothictaiW5	愛の広がる美しいフォント
HGHeiseiKakugothictaiW7	愛の広がる美しいフォント
HGHeiseiKakugothictaiW9	愛の広がる美しいフォント
HGHeiseiKakugothictaiW9L	愛の広がる美しいフォント
HGHeiseiKakugothictaiW9S	愛の広がる美しいフォント
HGHidemiHeiseikakugoW9	愛の広がる美しいフォント
HGHidemiHeiseikakugoW9L	愛の広がる美しいフォント
HGHidemiHeiseikakugoW9S	愛の広がる美しいフォント
HGSoeiKakugothicL	愛の広がる美しいフォント
HGSoeiKakugothicUB	愛の広がる美しいフォント
HGMetalKakugothicE	愛の広がる美しいフォント
HGInlainKakugothicH	愛の広がる美しいフォント
HGKasaneKakugothicH	愛の広がる美しいフォント
HGTEKakugothicU	愛の広がる美しいフォント
HGHappyGothicM	愛の広がる美しいフォント
HGHappyGothicB	愛の広がる美しいフォント
HGHappyGothicE	愛の広がる美しいフォント

* [HGNewGothicM](#) corresponds to the universal design (UD).

TrueType Font Typeface Sample

Round Gothic

Typeface	Sample Image
HGMarugothicL	愛の広がる美しいフォント
HGMarugothicM	愛の広がる美しいフォント
HGMarugothicB	愛の広がる美しいフォント
HGHeiseiMarugothictaiW4	愛の広がる美しいフォント
HGHeiseiMarugothictaiW8	愛の広がる美しいフォント
HGHeiseiMarugothictaiW8L	愛の広がる美しいフォント
HGHeiseiMarugothictaiW8S	愛の広がる美しいフォント
HGAkaneHeiseiMarugoW8	愛の広がる美しいフォント
HGAkaneHeiseiMarugoW8L	愛の広がる美しいフォント
HGAkaneHeiseiMarugoW8S	愛の広がる美しいフォント
HGREithic	愛の広がる美しいフォント
HGBouquet	愛の広がる美しいフォント
HGSoeiMarugothicL	愛の広がる美しいフォント
HGTEMarugothicU	愛の広がる美しいフォント
HGInlainMarugothicE	愛の広がる美しいフォント
HGKasaneMarugothicH	愛の広がる美しいフォント
HGKyapiMarugothicM	愛の広がる美しいフォント
HGKyapiMarugothicB	愛の広がる美しいフォント

Pop

Typeface	Sample Image
HGSoeiKakupoptai	愛の広がる美しいフォント
HGSoeiMarupoptai	愛の広がる美しいフォント
HGPrettyFrankH	愛の広がる美しいフォント
HGPrettyFrankHL	愛の広がる美しいフォント
HGPrettyFrankHS	愛の広がる美しいフォント

TrueType Font Typeface Sample

Brush style

Typeface	Sample Image
HGGyoshotai	愛の広がる美しいフォント
HGSeikaishotai	愛の広がる美しいフォント
HGKaishotai	愛の広がる美しいフォント
HGKyokashotai	愛の広がる美しいフォント
HGHanKointai	愛の広がる美しいフォント
HGGyokoku	愛の広がる美しいフォント
HGSoeiFutokaishotai	愛の広がる美しいフォント
HGSoeiReishotai	愛の広がる美しいフォント
HGSoeiFutoReishotai	愛の広がる美しいフォント
HGSoeilorishotai	愛の広がる美しいフォント
HGArisawaKaishotai	愛の広がる美しいフォント
HGSyounanGyoshotai	愛の広がる美しいフォント
HGSyounGyoshotai	愛の広がる美しいフォント
HGTakahashiFudekaishotai	愛の広がる美しいフォント
HGTakahashiReishotai	愛の広がる美しいフォント
HGHakushuFutoKaishotai	愛の広がる美しいフォント
HGHakushuSekitokaishotai	愛の広がる美しいフォント
HGHakushuGokubutoKaishotai	愛の広がる美しいフォント
HGHakushuGyososhotai	愛の広がる美しいフォント
HGHagoromoL	愛の広がる美しいフォント
HGHagoromoM	愛の広がる美しいフォント
HGHagoromoB	愛の広がる美しいフォント
HGHagoromoE	愛の広がる美しいフォント
HGKyokusuiM	愛の広がる美しいフォント
HGKyokusuiE	愛の広がる美しいフォント
HGKisimotoKaishotai	愛の広がる美しいフォント
HGSekiReishotai	愛の広がる美しいフォント
HGSekiEngeimoji	愛の広がる美しいフォント
HGSumoumoji	愛の広がる美しいフォント
HGHigemoji	愛の広がる美しいフォント
HGKagoji	愛の広がる美しいフォント
HGOzawaKaishotai	愛の広がる美しいフォント
HGEdomojiKanteiryu	愛の広がる美しいフォント
HGTenshotai	愛の広がる美しいフォント

TrueType Font Typeface Sample

Pen writing

Typeface	Sample Image
HGSoeiPenjitai	愛の広がる美しいフォント
HGSoeiBifutoPenjitai	愛の広がる美しいフォント
HGChibaPenjitai	愛の広がる美しいフォント
HGHakushuPengyososhotai	愛の広がる美しいフォント
HGHakushuPenkaishotai	愛の広がる美しいフォント

ARIB version

Typeface	Sample Image
HGAREJHeiseiKakugothictaiW5	テ S ニ 多 解 SS B N 交 映 無
HGAREJHeiseiMarugothictaiW4	テ S ニ 多 解 SS B N 交 映 無
HGAREJHeiseiMarugothictaiW8	テ S ニ 多 解 SS B N 交 映 無

PRO version

Typeface	Sample Image
HGMinchoLPRO	愛の広がる美しいFont
HGMinchoBPRO	愛の広がる美しいFont
HGNewGothicMPRO	愛の広がる美しいFont
HGGothicBPRO	愛の広がる美しいFont
HGGothicEPRO	愛の広がる美しいFont
HGMaruGothicMPRO	愛の広がる美しいFont
HGREithicPRO	愛の広がる美しいFont
HGSGyoshotaiPRO	愛の広がる美しいFont
HGSeikaishotaiPRO	愛の広がる美しいFont
HGSoeiPresenceEBPRO	愛の広がる美しいFont
HGSoeiMarupoptaiPRO	愛の広がる美しいFont
HGSoeiReishotaiPRO	愛の広がる美しいFont

* HGNewGothicM-PRO corresponds to the universal design (UD).

OCR

Typeface	Sample Image
HGShuzanSuuji	0123456789%,.
HGOOCR-B HGOOCR-BK HGOOCR-BK-W	012345ABCDEabcde
HGOOCR-HN	0123456789
HGFarrington 7B	0123456789

TrueType Font Typeface Sample

Extended character font

Typeface	Sample Image
HGMinchoLKakuchoSTB	啞逢芦飴溢鰭↔↔TEL TEL 販
HGGothicBKakuchoSTB	啞逢芦飴溢鰭↔↔TEL TEL 販
HGSeikaishotaiKakuchoSTB	啞逢芦飴溢鰭↔↔TEL TEL 販

Graphic font

Typeface	Sample Image
GFGraphicFubutsu	
GFSoeiPopillust	
GFillustcut	

Barcode system

Typeface	Sample Image (0-9)
HGCODE39	
HGCODE128	
HGCODENW7	
HGCODEPOS2	

European

Typeface	Sample Image
HGTU Sans Medium Halfwidth	012345ABCDEabcde
HGTU Sans Medium	012345ABCDEabcde
HGMR Sans Bold	012345ABCDEabcde
HGMR Serif Light	012345ABCDEabcde
HGUM Sans Medium Condensed	012345ABCDEabcde
HGUM Sans Medium	012345ABCDEabcde
HGUM Sans Medium Extended	012345ABCDEabcde
HGUM Sans Bold	012345ABCDEabcde
HGUM Sans Bold Extended	012345ABCDEabcde

* HGUM Sans corresponds to the universal design (UD).

Simplified chinese characters (Certified by the Chinese Government)

Typeface	Sample Image
HGJHeiM Simplified	广告牌矗立在纽约

Traditional chinese characters

Typeface	Sample Image
HGJHeiM Traditional	專用發電系統規格



Ricoh Company, Ltd. Font Section

3-2-3, Shin-Yokohama, Kouhoku-ku, Yokohama-shi, Kanagawa 222-8530, Japan

<http://industry.rioh.com/font/>

font-info@nts.rioh.co.jp

- Microsoft, Windows, and Windows Vista are either registered trademarks or trademarks of Microsoft Corporation in the United States and/or other countries.
- MS Mincho and MS Gothic are trademarks of Microsoft Corporation.
- Unicode is a registered trademark of Unicode, Inc. in the United States and other countries.
- TrueType is a trademark of Apple Inc.
- IBM is a trademark or registered trademark of International Business Machines Corp., registered in many jurisdictions worldwide.
- Adobe PDF is a registered trademark or trademark of Adobe Systems Incorporated in the United States and/or other countries.
- Linux is a trademark of Linus Torvalds.
- UNIX is a registered trademark in the United States and other countries, licensed exclusively through X/Open Company Ltd.
- All other company names and product names listed in this catalogue are trademarks or registered trademarks of their respective companies.